

Install the ELLIX20 USB I/F USB Virtual Com Port driver.

(Windows 2K/XP) – USB_VCP_2k.zip

Windows 9X : USB_VCP_9x.zip
Windows 2k/XP : USB_VCP_2k.zip

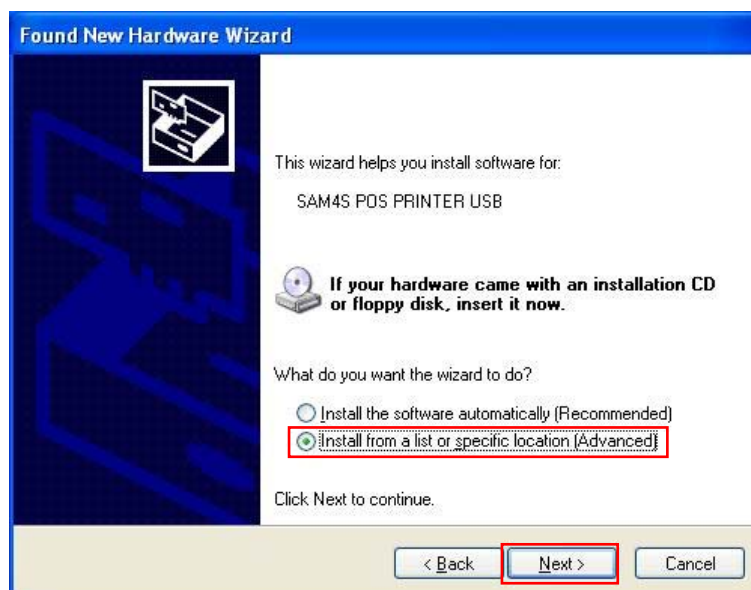
1. Connect the device to a spare USB port on your PC. And then turn the printer on.
2. This will launch the Windows Found New Hardware Wizard.



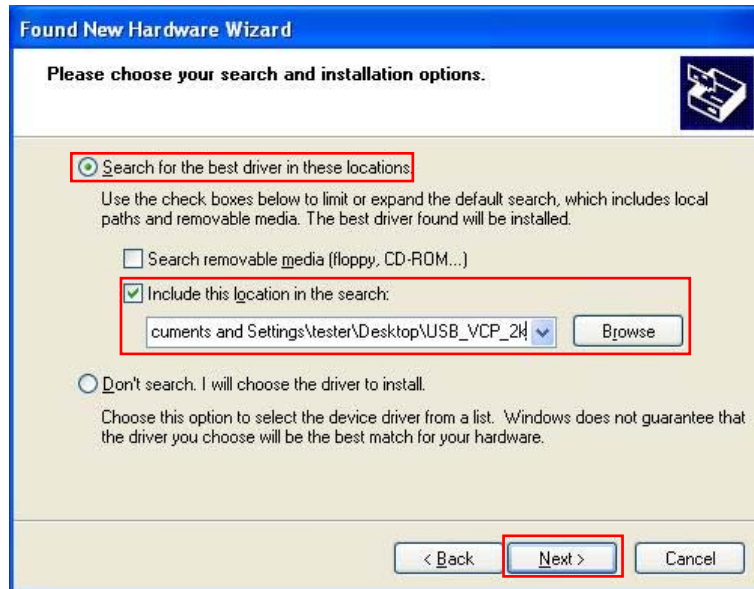
3. Select the "No, not this time" and click "Next>".



4. Select the "Install from a list or specific location (Advanced)" and click "Next".



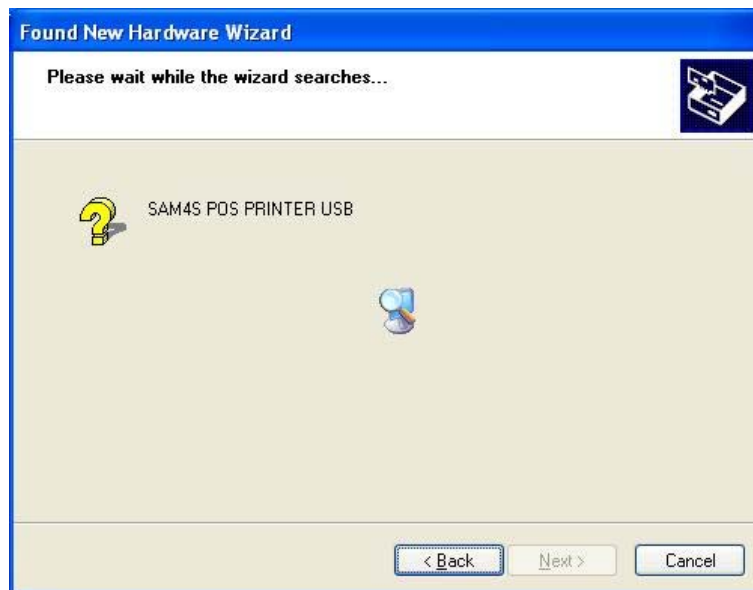
5. Select “Search for the best driver in these locations” and enter the file path in the combo-box that downloaded driver file(unzipped). (“C:\USB_VCP_2k” in the example below) or browse to it by clicking the browse button. Once the file path has been entered in the box, click next to proceed)



6. Click “Continue Anyway”.



7. The following screen will be displayed as Windows copies the required driver files.



8. Windows should then display a message indication that the installation was successful.
Click “Finish” to complete the installation.

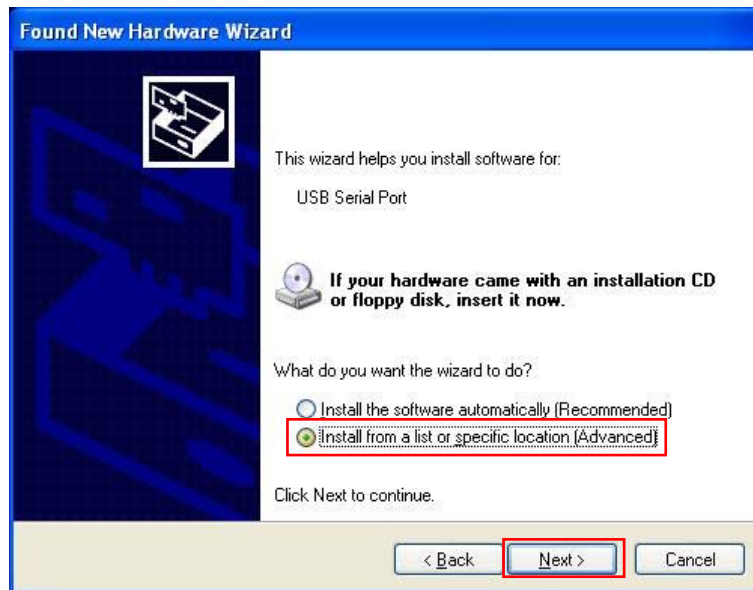


9. And then Pop-up “USB Serial Port” message in the Windows tray, launch the hard wizard again.

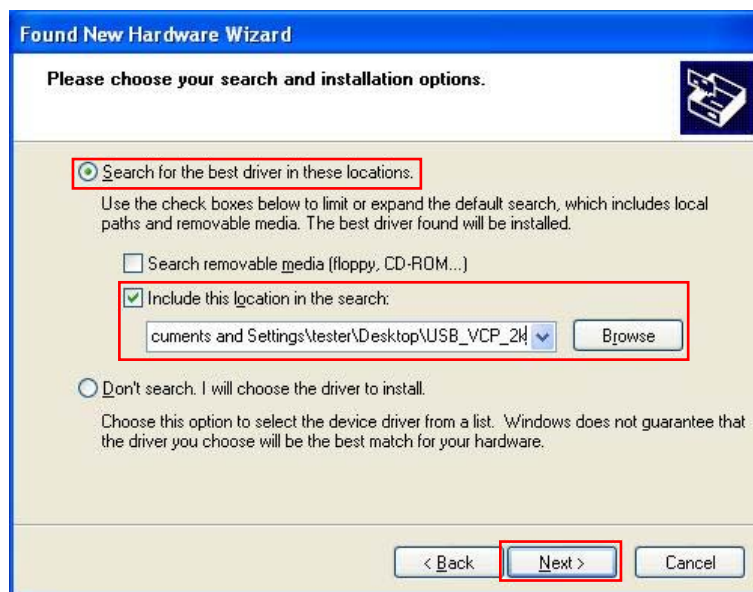


10. Select “No, not this time” and click the “Next” button.



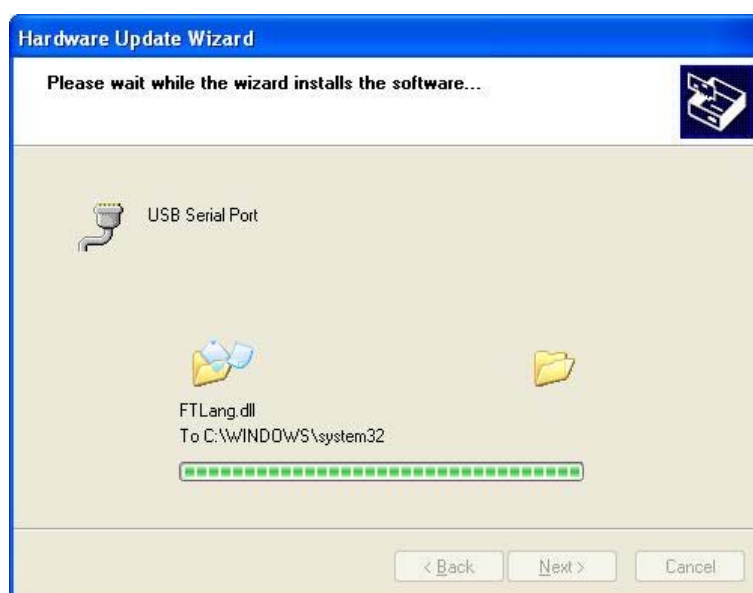


11. Select the same folder include unzipped driver and click the “Next” button.





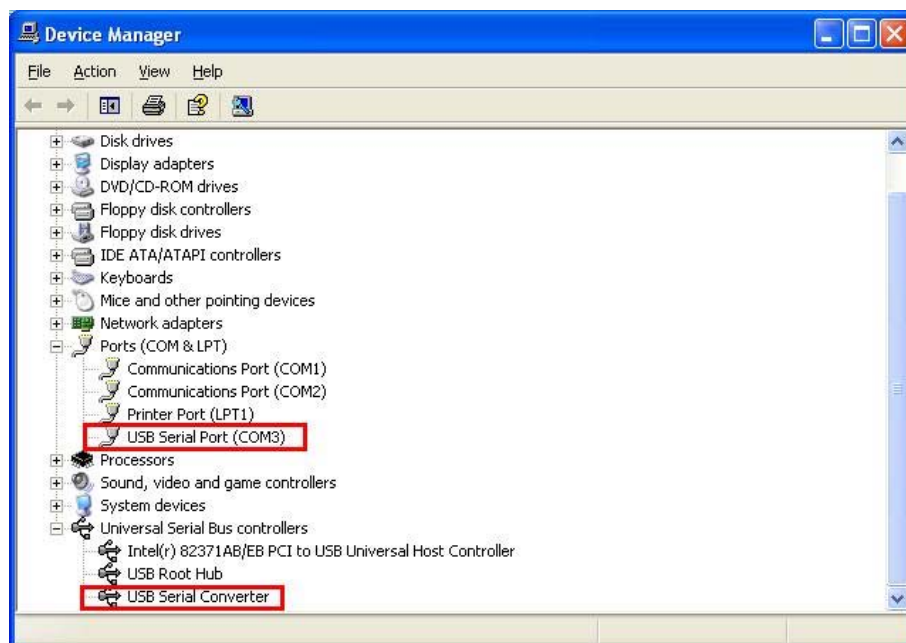
12. Click "Continue Anyway".



13. When Click “Finish” button, USB Serial Port driver installation is completed.



14. Open the Device Manager (located in “Control Panel-System”) then select the “Hardware” tab and click “Device Manager”) and select “View > Device by Connection”. The device appears as “USB serial converter” and “USB Serial port(COMX)”.



15. You can access the USB I/F printer by virtual COMX ports.